

NORTHERN LIGHTS

— *Porcelain* —

**LUXURY DESIGNS
WITHOUT BORDERS**

INTRODUCING NORTHERN LIGHTS PORCELAIN

Created with the most realistic designs mimicking nature:

Our product portfolio is comprised of Marble, Concrete, Metal and Stone collections with over 30 surface options. Our large format slabs are 160 x 320 cm (63" x 126") in size with 12 mm thickness providing high durability and toughness.

Produced using the latest Italian technology:

We meticulously select the finest raw materials in Europe to produce our sintered stone. Manufacturing process is handled by multiple SACMI Continua+ units accommodating world-class machinery equipped with fully automated systems. We apply stringent quality control measures to produce top quality large-format porcelain slabs.

Selection of matte and polished surface options:

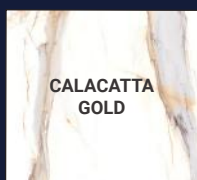
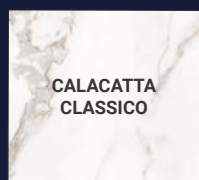
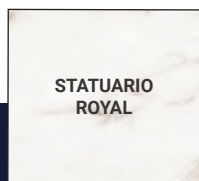
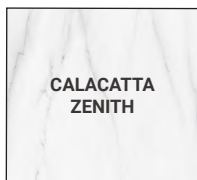
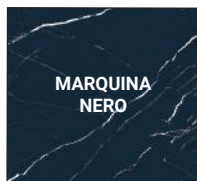
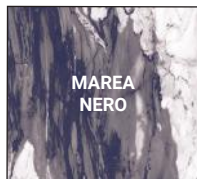
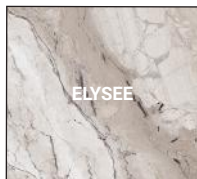
Our polished surfaces have perfect non-wavy mirror like reflection because of using advanced polishing systems. We offer a variety of matte surface options in our portfolio. Our sintered slab designs include book-match, end-match loop and random face options for all types of applications.

Disclosures

Slab faces are supplied randomly. Please contact us for availability of options in stock. The product is subject to slight variances in hue, shade, and color. Pictures in this brochure are only indications of slab appearances.

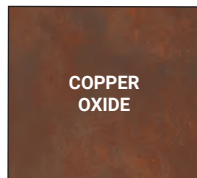
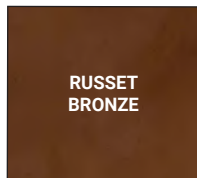
OUR COLLECTIONS

MARBLE

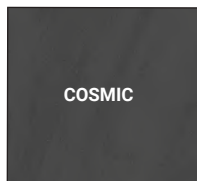


OUR COLLECTIONS

METAL



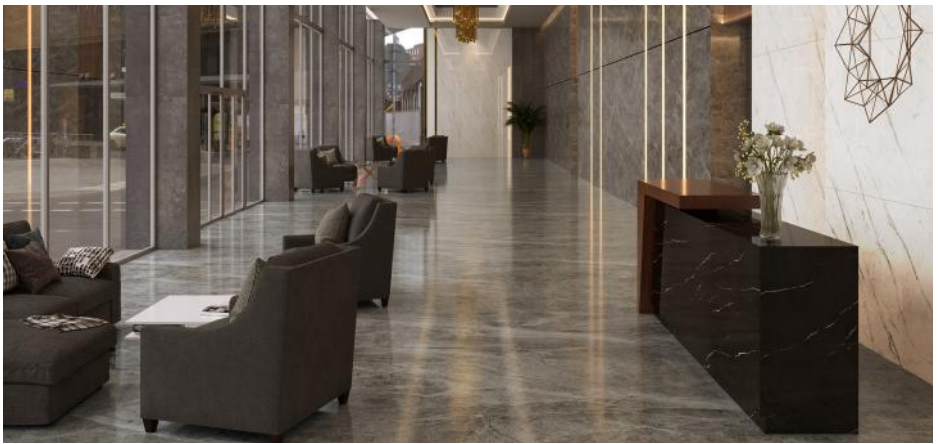
STONE



CONCRETE







ADVANTAGES OF NORTHERN LIGHTS PORCELAIN

The advantages of our porcelain slabs increase the possibilities of their use in both residential and commercial applications.

Lowest maintenance requirements

Hygienic surface

Liquid repellent and Water resistant

Impact resistant

Frost resistant

Scratch resistant and Abrasion resistant

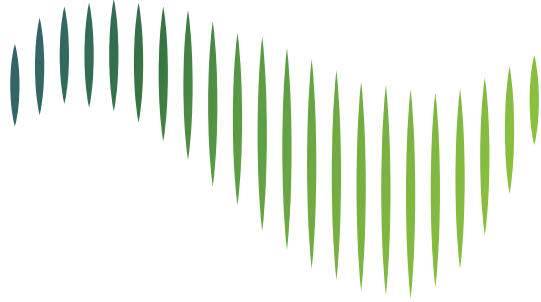
Chemical and Stain resistant

Fire resistant

Heat resistant

Resistant to bending





NORTHERN LIGHTS

— Porcelain —



WWW.NLPORCELAIN.CA
EMAIL : SALES@NLPORCELAIN.CA
EXCLUSIVE DISTRIBUTION PARTNER:
PREMIUM SURFACES
140 - 7474 79 ST.
RED DEER, ALBERTA, T4P 0R3